



# energex<sup>®</sup>

EXTERIOR  
WALL  
SYSTEMS



SPECIALTY  
COATINGS



A

B

C

D

C

E

# The Energex® System

The **energex® system** is an exceptional exterior insulation and finish system consisting of four major components which provide permanent insulation, shape and textures, forming a unique exterior wall.

The system insulates on the exterior, closing out most infiltration and maximizing exterior thermal stress. Available in an unlimited variety of colors and textures, it resists cracks, stains and tendency to fade.

## The Four Components Are:

**A - energex® Insulation Board** - a panel of expanded polystyrene, manufactured under stringent requirements and quality control. Provides optimum system insulation, varies in thickness and conforms to architect's shapes and designs.

**B - Emermite Mesh (optional)** is a heavy-duty fiberglass reinforcing mesh designed for high impact areas. Combined with the energex® reinforcing mesh, it offers substantial impact-resistance in heavy volume traffic areas.

**C - energex® Matrix** - is uniquely formulated to be utilized as an adhesive for the energex® insulation board, as well as to embed the mesh and serve as a base for the energex® finish.

**D - energex® Reinforced Mesh** - is a key to preventing surface cracking. The fiberglass is specifically designed for embedding into the energex® matrix, providing a strong base for the energex® finish.

**E - energex® Finish** - is a 100% acrylic synthetic material available in a wide choice of applied textures and colors, to satisfy architectural motifs.



# Commercial



energex® exterior wall systems have been provided to over 100 million square feet since 1978. energex® continues to provide exceptional wall systems with its unique chemistry and unparalleled service. With its many distribution and production outlets, energex® can furnish quality products to its clients throughout the United States and many parts of the World.

energex® remains committed to supplying advanced products to the EIFS industry. From its silicone based finishes to metallic, traditional and stone finishes, energex exhibits its superior technological advancements.



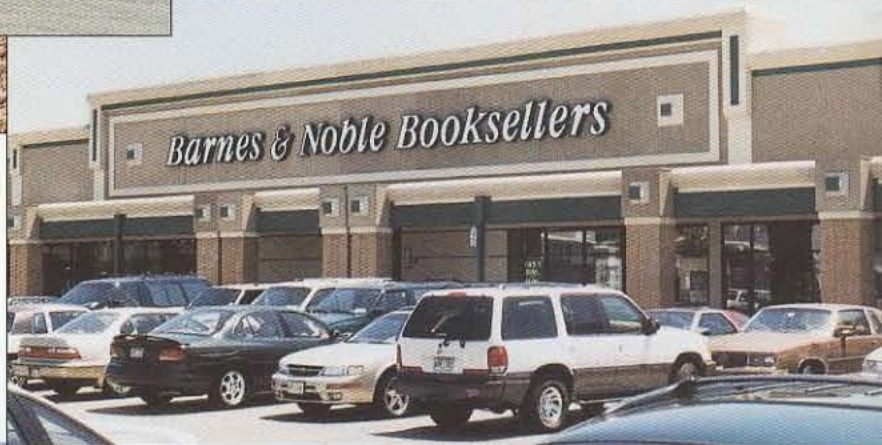
energex® offers a variety of systems ranging from the traditional EIFS to its Hardcoat, Quik-Wall, CX and Elastomeric Systems. These systems provide options to the owner/architect to fulfill the structural or design elements of the facade.







energex® has been utilized on many types of projects. The system meets all Uniform Building Codes and has completed some of the most comprehensive testing programs consisting of flame resistance, water resistance, freeze/thaw, impact resistance, water vapor transmission and wind load capacities. energex® is approved for use in New York City,



Los Angeles and Las Vegas. energex® has been utilized on Corporate Headquarters, Car Dealerships, Hotels, Resorts and Residential Projects.

There are many fine exterior wall systems but only one bears the name of energex®. When it comes to providing a quality product, quick turn around, custom colors and textures, energex® is the product of choice.

For specific information on the energex® systems please contact your local salesperson or call our Corporate Headquarters at (888) 343-7462.





# Residential



energex® Exterior Wall System offers the homeowner versatility and creativity unequalled to any other exterior siding system. With what single product can one create arches, reveals, quoins, cornices, with an unlimited color selection? One answer... The energex® Exterior Wall System.



Our International network of representatives are anxious to meet with you to discuss the specific details on your residential project. The energex® System has been utilized on residential projects from Puerto Rico to the State of Washington. energex® conforms to all Uniform Building Codes and has completed some of the most comprehensive testing programs consisting of flame resistance, water resistance, freeze/thaw, impact resistance, water vapor transmission, and wind load capacities.







A home is an important long term investment. The energex® System is fully warranted and is backed up by a Company manufacturing coatings for the Construction Industry since 1955.

energex®, a leader in the manufacture of exterior wall and finish systems believes a home is the most significant purchase one may endure and that is why we fully warranty our products.



The prime strength of energex® is its quality control. The energex® name is synonymous with meticulous quality, ingenuity and careful attention to detail.

Create the house of your dreams with the energex® System. With the use of colors, shapes and durability, your dream will come true.

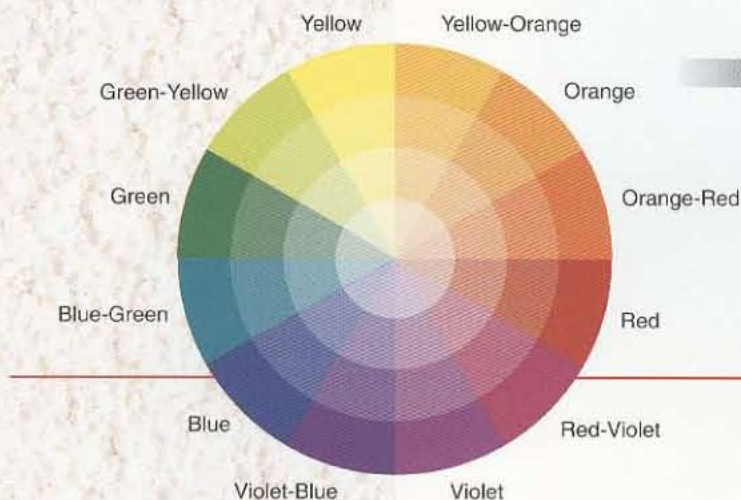


Contact a local energex® Sales Representative to help you create unique details on your home.

We believe our customers are our best assets.



# Color Harmonies



- YELLOW** - Cheerful, sunny, cautious
- ORANGE** - Emotional, positive, excited
- RED** - Passionate, negative, dangerous
- VIOLET** - Opulent, contemporary, royal
- BLUE** - Trustworthy, stable, serene, cool
- GREEN** - Safe, environmental, comforting

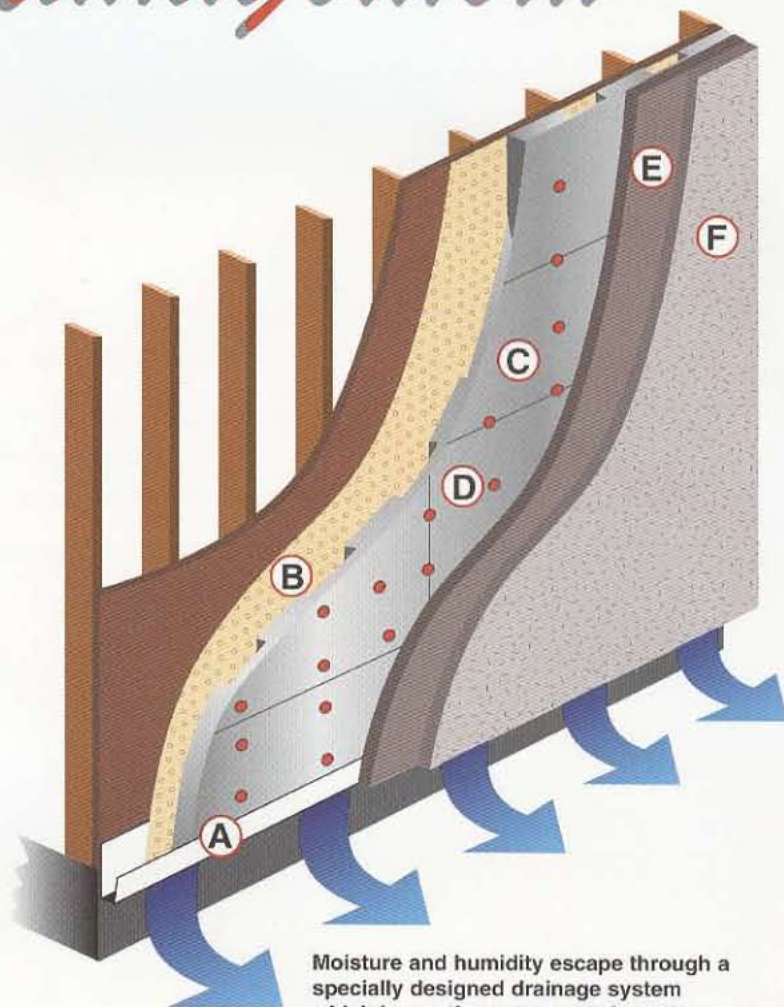
- BLACK** - Serious, sophisticated, elegant
- WHITE** - Pure, peaceful, clean
- GRAY** - Neutral, mature, cool

- PASTELS** - Youthful, soft, sensitive
- BROWN** - Wholesome, organic, down-to-earth

# Water Management

## COMPONENTS

- A** - Weeping Starter Track
- B** - Moisture Barrier
- C** - Channeled EPS Foam Board (1.500" min.)
- D** - Mechanically Fastened Foam at Stud Locations
- E** - Matrix Coat with Embedded Mesh
- F** - energex® Finish Coat



**Important Notice To Purchaser** - The following is made in lieu of all warranties, expresses or implied: energex's (Vitricon, Inc.) only obligation shall be to replace such quantity of the product proved to be defective. Neither seller nor manufacturer shall be liable for any injury, loss or damage, direct or consequently arising out of the use of or the inability to use the product. Before using user shall determine the suitability of the product for his intended use, and user assumes all risk and liability whatsoever in connection therewith. The foregoing may not be altered except by an agreement signed by officers of seller and manufacturer.

Moisture and humidity escape through a specially designed drainage system which keeps the water away from the structures substrate.





**energex<sup>®</sup>**

**Energex Wall Systems  
2960 Woodbridge Avenue  
Edison, NJ 08837  
Phone: (888) 343-7462**

**email:** [info@energexwallsystems.com](mailto:info@energexwallsystems.com)  
**web:** <http://energexwallsystems.com>